

# Reverse Osmosis



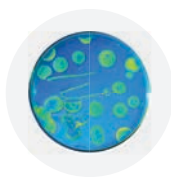
Removes 97% of Minerals



Saves water



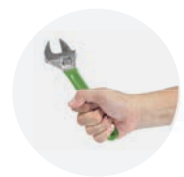
No buildup



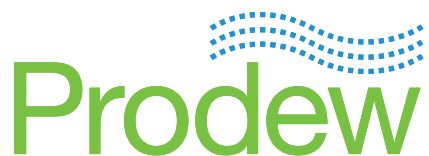
Reduces bacteria



Reduces minerals



Easy maintenance

**ProdeW**



## WHAT IS REVERSE OSMOSIS?

It is the process in which pure water is produced by forcing water through a semipermeable membrane to remove impurities.

## WHY USE PRODEW'S RO?

Including an RO system in your store reduces mineral accumulation on mirrors, cases and other components of your product displays.

ProdeW RO Systems are designed to remove 97% of minerals. Our systems are designed to meet misting, humidity, and supermarket requirements. We can provide full-store filtration systems. ProdeW combines the highest quality components with state of the art technology for superior systems.

**Larger RO systems are available upon request.**



### RO 100

- Filters 100 gallons per day
- Ideal for 8-24 ft display cases
- 1 - 5 micron carbon filter
- 1 - 10 micron carbon filter
- 100 GPD RO membrane

### RO 150



- Filters up to 150 gallons per day
- 1 - Inline five micron sediment filter
- 3 - 10" ten micron carbon filters
- 1 - High flow TFC light industrial membrane
- 1 - 24vac pressure booster pump
- Available in wall-mount or stand-alone
- Pressure switch operating pressure: 40-60 PSI
- A reverse osmosis bypass kit
- 1 - two gallon storage tank (five gallon available)
- Metal powder-coated bracket

### RO 300

- Filters up to 300 gallons per day
- 1- Inline five micron sediment filter
- 3 - 20" ten micron carbon filters
- 2 - High flow TFC light industrial membranes
- 1 - 24vac pressure booster pump
- Pressure switch operating pressure: 40-60 PSI
- A reverse osmosis bypass kit
- 1 - two gallon storage tank (five gallon available)
- Metal powder-coated bracket
- Ideal for multiple displays or large storage humidity

